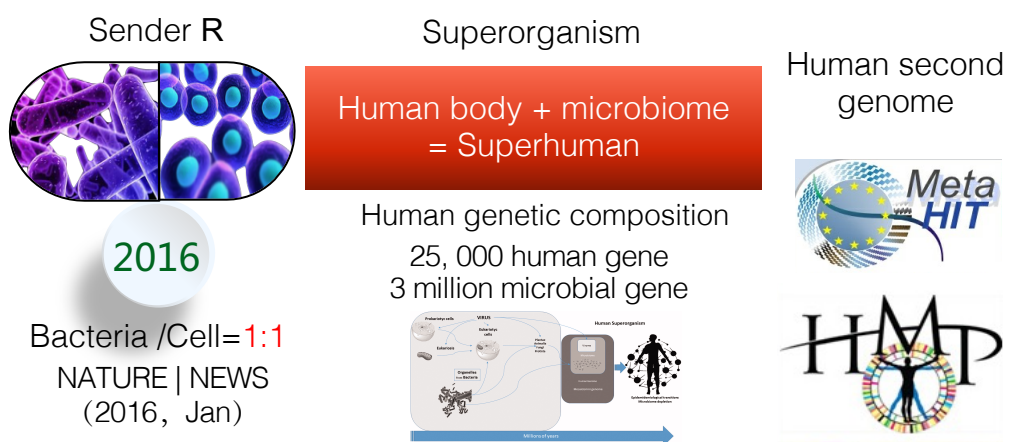
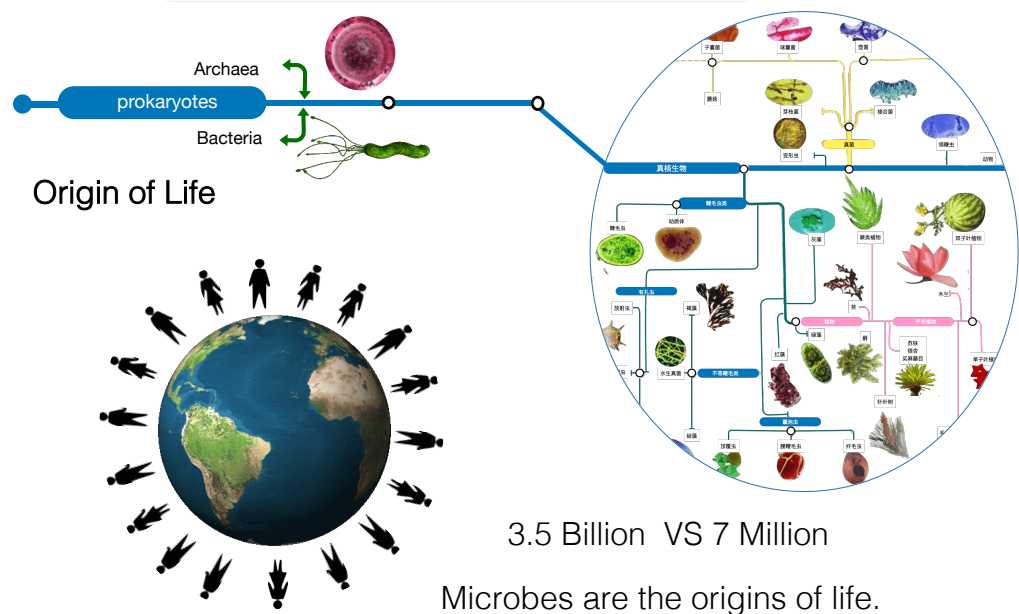


Oral microbiome and health management throughout the life cycle

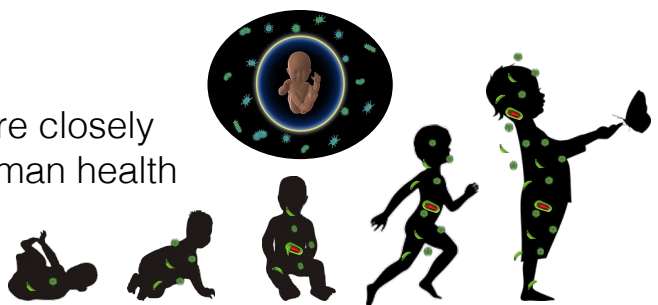
Yuan Wang, Jie Zhang, Shuli Deng, Lingkai Su

Stomatology Hospital, School of Stomatology, Zhejiang University School of Medicine;
Clinical Research Center for Oral Diseases of Zhejiang Province;
Key Laboratory of Oral Biomedical Research of Zhejiang Province

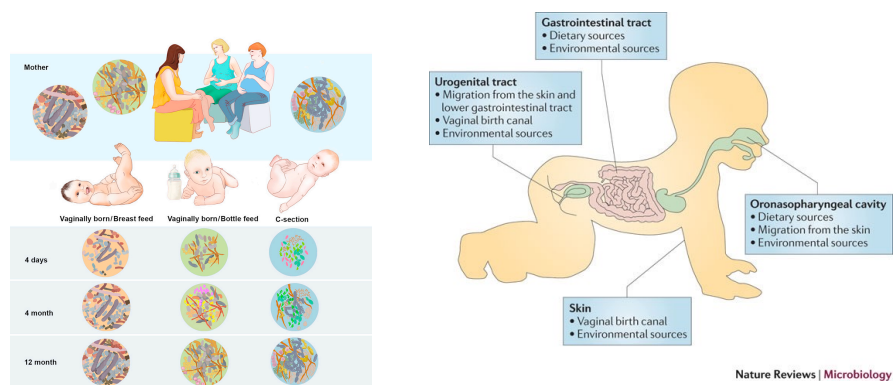
Background



Microbes are closely related to human health

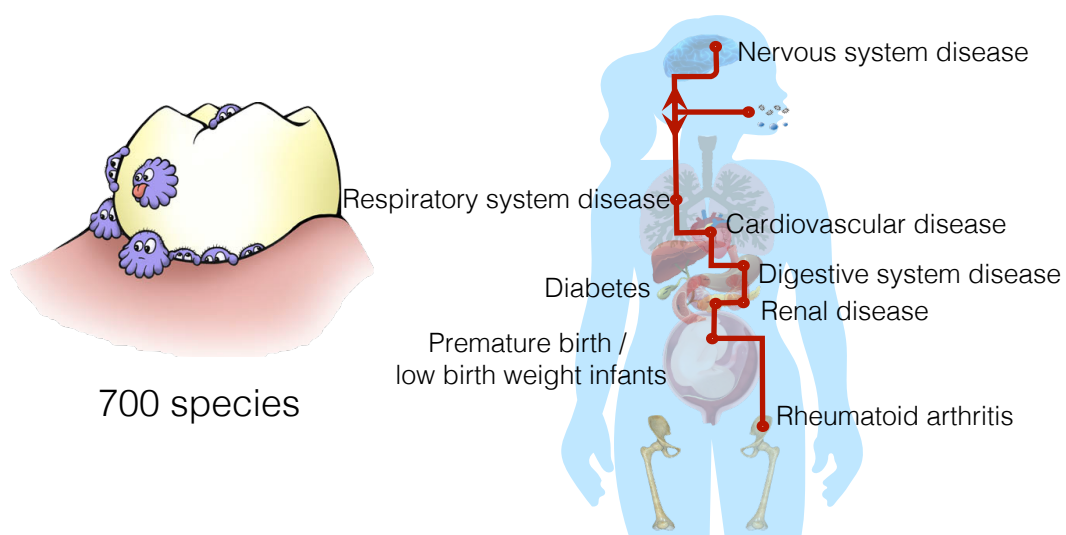


Mother and child are connected by human microbe



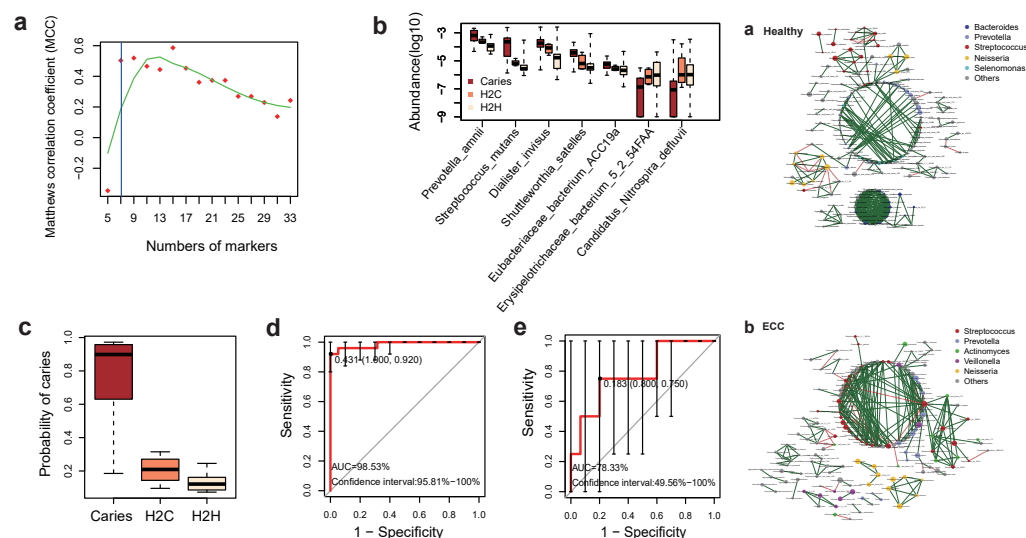
Cell Host Microbe. 2015
Volume 17, Issue 5

Nat Rev Microbiol. 2011
Volume 9, Issue 1

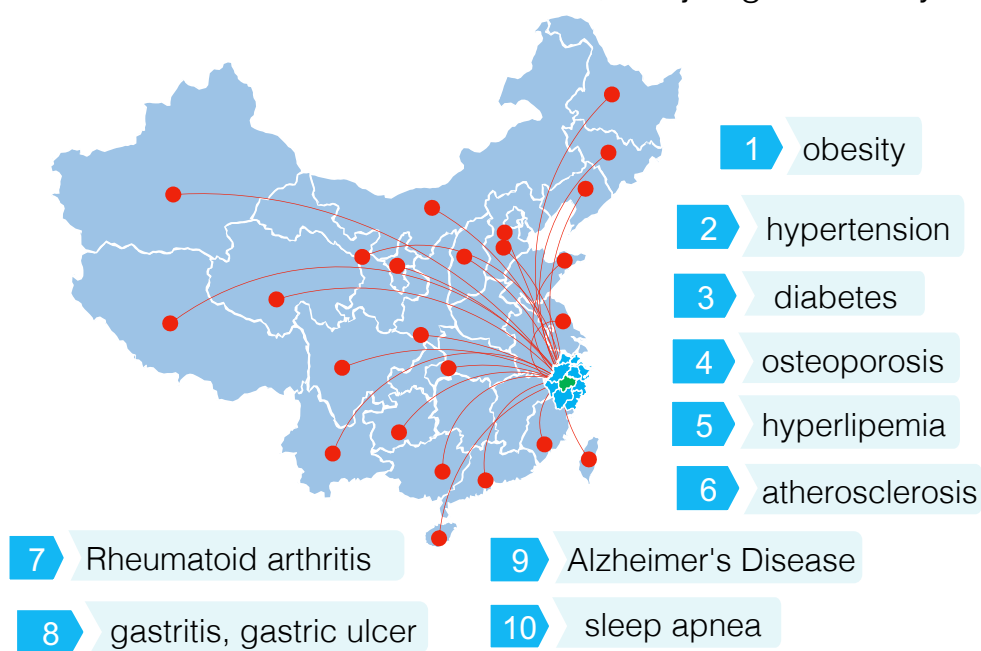


Foundation

Classifier to predict the future new ECC onsets [mSystems. 2019]

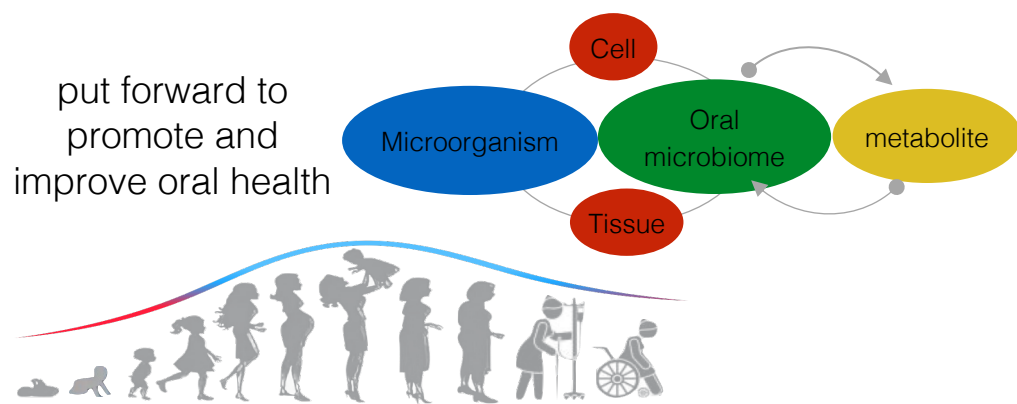


Chronic Disease Research Institute, Zhejiang University



Innovation

put forward to promote and improve oral health



establish an oral microbiome routine

